

# 5-Port GbE Switch with 1 GbE SFP

## User's Guide

### 1. Features

- Provides four tri-speed copper ports and one 1000M SFP
- All copper ports support auto-negotiation and auto-MDI/MDI-X detection
- Supports 802.3x flow control for full-duplex and backpressure for half-duplex
- Supports IEEE802.3az Energy Efficient Ethernet (EEE)
- Supports jumbo frame length of 9216 bytes at full wire speed forwarding
- Supports link-up cable length power saving and link-down power saving

### 2. LED Indicator

#### Power

- Green (ON): Power is on
- Green (OFF): Power is off

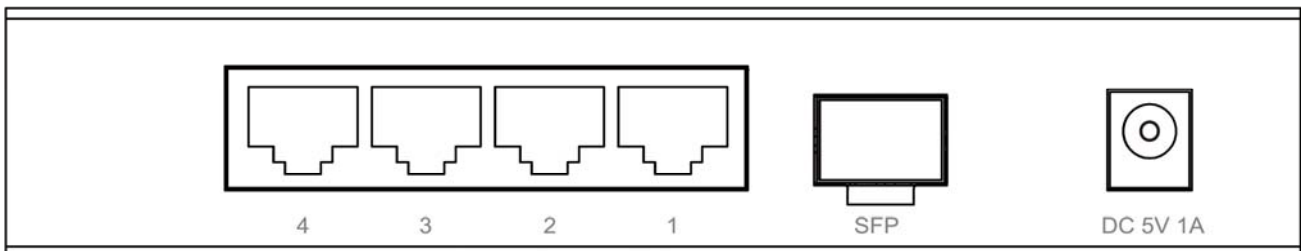
#### LAN Port 1~4

- Green (ON): indicate the port is operating at 1000Mbps
- Green (Blink): indicate the activity is occurring
- Orange (ON): indicate the port is operating at 10/100Mbps
- Orange (Blink): indicate the activity is occurring

#### SFP

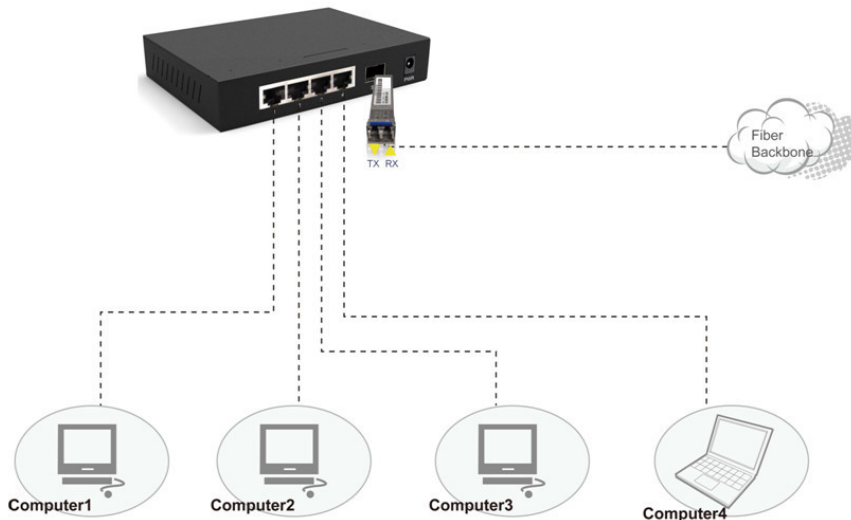
- Green (ON): indicate the port is operating
- Green (Blink): indicate the activity is occurring

### 3. Back Panel



## 4. Application

5-Port GbE Switch with 1 GbE SFP



## 5. Technical Specifications

<b>Hardware</b>	
<b>Standard</b>	IEEE 802.3 10Base-T, IEEE 802.3u 100Base-TX IEEE 802.3ab 1000Base-T, IEEE 802.3z 1000Base-X, IEEE 802.3x Flow Control
<b>Network Ports</b>	4 10/100/1000Mbps Gigabit copper ports: Shielded RJ-45, auto-negotiation, auto-MDI/MDI-X support 1 1000Mbps Gigabit fiber SFP port: SFP supports standard SFP fiber transceiver installation
<b>Network Cables</b>	10/100/1000Mbps Copper: Cat. 5, 5e, 6 or higher up to 100m 1000Base-X: MMF 50/125 $\mu$ m, 60/125 $\mu$ m, SMF 9/125 $\mu$ m
<b>MAC Address Table</b>	2K entries
<b>Buffer Memory</b>	128K bytes
<b>Dimension</b>	147 x 105 x 28mm (W x D x H)
<b>Mounting Support</b>	Wall, Magnetic
<b>Power Input</b>	+5V via external power adapter
<b>Temperature</b>	Operating: 0° ~ 40°C Storage: -20° ~ 70°C
<b>Humidity</b>	10% ~ 90% (non-condensing)
<b>Certifications</b>	CE/FCC compliance
<b>RoHS</b>	RoHS compliance

DOC.150908